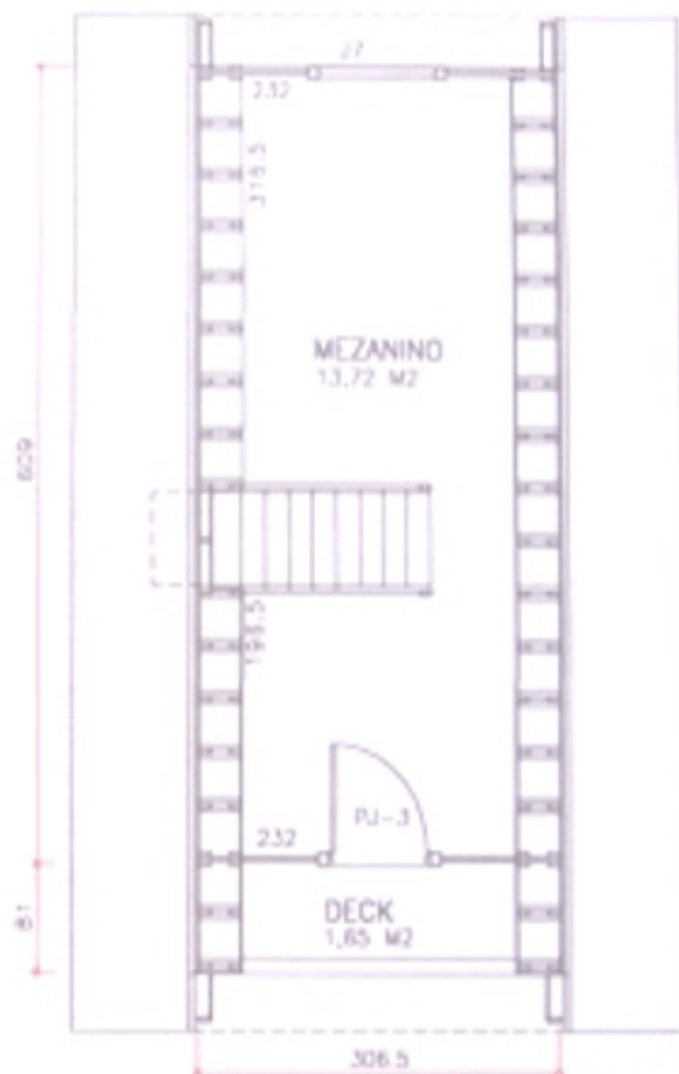


PLANTA PAVIMENTO TERREO  
AREA = 34,50m<sup>2</sup>

AREA TOTAL = 55,65m<sup>2</sup>



PLANTA MEZANINO  
AREA = 21,15m<sup>2</sup>

ABERTURAS

P1	-	60x210
PJ4	-	120x210
PJ3	-	80x210
J6	-	60x60
J7	-	100x100



**CHALÉ SUIÇO**  
55,65 m<sup>2</sup>

MAQUETE ILUSTRATIVA